



Ayto de Ponga

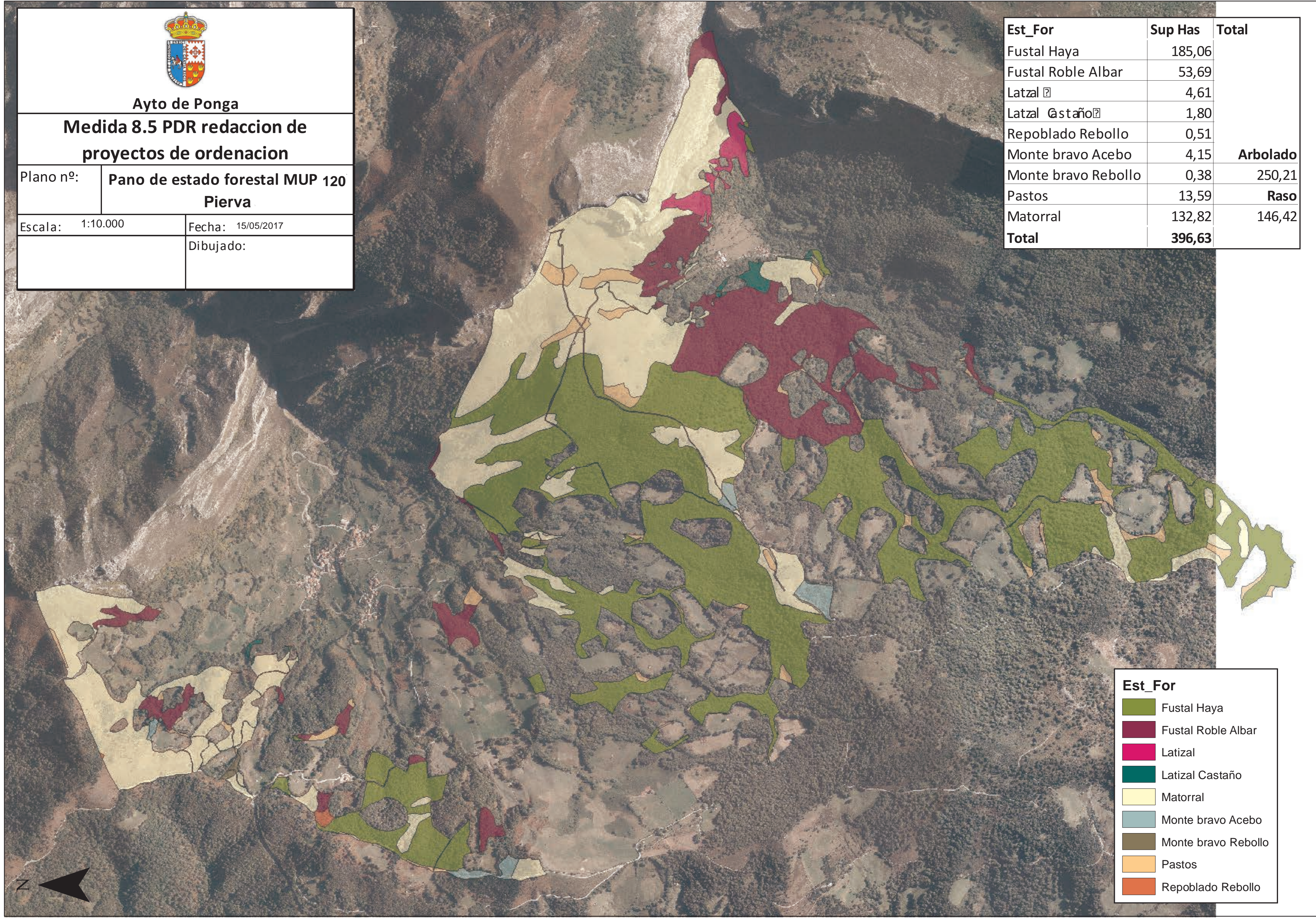
**Medida 8.5 PDR redaccion de  
proyectos de ordenacion**










Plano nº: **Pano de estado forestal MUP 120  
Pierva**

Escala: 1:10.000 Fecha: 15/05/2017

Dibujado:

Est_For	Sup Has	Total
Fustal Haya	185,06	
Fustal Roble Albar	53,69	
Latizal	4,61	
Latizal Castaño	1,80	
Repoblado Rebollo	0,51	
Monte bravo Acebo	4,15	<b>Arbolado</b>
Monte bravo Rebollo	0,38	250,21
Pastos	13,59	<b>Raso</b>
Matorral	132,82	146,42
<b>Total</b>	<b>396,63</b>	



Est_For	
	Fustal Haya
	Fustal Roble Albar
	Latizal
	Latizal Castaño
	Matorral
	Monte bravo Acebo
	Monte bravo Rebollo
	Pastos
	Repoblado Rebollo

